

# NOLAK

/ DATA SHEET pag 159

Linea essenziale ed elegante curata in ogni piccolo dettaglio. Ha la caratteristica di proporre la stufa classica adattabile in ambienti con spazi ristretti.

Simple and elegant lines, with attention to every small detail. It is a classic stove, designed to be adaptable to environments with limited space.

Ligne essentielle et élégante, parfaitement jouée dans chaque détail. Il s'agit d'un poêle classique qui s'adapte à des locaux étroits.

Linea simple y elegante, atenta a cada pequeño detalle. Tiene la característica de ofrecer la estufa clásica adaptable en entornos con espacios reducidos.

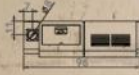
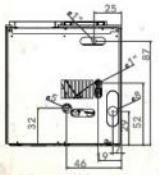
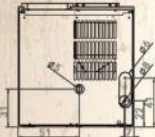
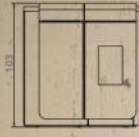
SOLO 30CM DI PROFONDITÀ / ONLY 30CM OF DEPTH



- K** combustion\*
- classe energetica
- double door
- 5 years warranty
- ecodesign2022

STANDARD PAG.140

KALON | hallway products



ARIA VENTILATA /  
VENTILATED AIR / AIR VENTILÉ /  
AIRE VENTILADA: 10KW|10 CkW

L96cm x P30cm x H103cm

**h2o** IDRO / HYDRO /  
HYDRO / HIDRO:  
13KW|16KW|19KW

L96cm x P30cm x H103cm



**AIRE 10 2.390 EUROS**  
**HIDRO 13 3.390 EUROS**  
**HIDRO 19 3.990 EUROS**

**AIRE 10C 2.720 EUROS**  
**HIDRO 16 3.690 EUROS**  
**HIDRO 19 3.990 EUROS**

ACCIAIO / STEEL  
gray brown | ruggine  
oro | sable  
blu avio | grigio antracite  
bianco | nero

gray brown | rust  
gold | sable  
blue avion | anthracite gray  
white | black

# NOLAK



AIR / 10kW	HYDRO / 13kW	/ 16kW	/ 19kW
★★★★★ 3stelle	★★★★★ 4stelle		
8,9 kW	11,5kW <b>9,0kW</b>	14,6kW <b>11,6kW</b>	16,6kW <b>13,2kW</b>
3,2 kW	6,1kW <b>3,9kW</b>	6,1kW <b>3,9kW</b>	6,1kW <b>3,9kW</b>
88,7 - 92,1 (%)	91,9 - 93,2 (%)	91,8 - 93,2 (%)	91,8 - 93,2 (%)
80 mm	80 mm	80 mm	80 mm
215 (*) m3	260 (*) m3	330 (*) m3	401 (*) m3
175 kg	205 kg	205 kg	205 kg
18 kg	21 kg	21 kg	21 kg

CE EN 14785



L96cm x P30cm x H103cm

BODY



AESTHETIC COATING

